

RMBI NEWS

ISSUE 24
SPRING / SUMMER
2021



Residents reunite

with family
and friends

Staying strong

to protect our
residents

Green-fingered residents

share their
passion with local
schoolchildren



Kind Supportive Trusted

Caring is our way of life

www.rmbi.org.uk

If you would like
an audio version of
RMBI News, please email
marketing@rmbi.org.uk



6



▲
Resident John Richardson
is reunited with his wife,
Judy, at Connaught Court
in York.
.....

.....▶
Resident Betty
Barker receives her
first vaccination at
Prince Edward Duke
of Kent Court, Essex.
.....

8



11



◀
Resident David Jepson
at Harry Priestley House
in Doncaster, with
garden plants donated
by schoolchildren.
.....

Contents

3 Welcome note • Your say

4 News in brief

6 Residents reunite with
family and friends

8 Staying strong to protect
our residents

10 Resilience, relief and
recovery: MCF update

11 Green-fingered residents
share their passion with
local schoolchildren

12 RMBI Care Co. Homes

Send us your comments about this issue or any suggestions for future
issues of RMBI News at marketing@rmbi.org.uk or write to us at
RMBI News Team, 60 Great Queen Street, London WC2B 5AZ



A message from Mark LLOYD, MD



For all of us, the last year has been unprecedented responding to the threat of the global pandemic.

As we plan for the summer, we need to reflect on the impact Covid-19 has had on our Homes over the past year. Our staff teams have responded extremely well to the effects of the pandemic and we have strong infection control protocols and Personal Protective Equipment (PPE) in place. This has been further enhanced by over 95% of residents benefiting from the vaccine as well as the majority of our workforce. The resilience of our teams is very much acknowledged and celebrated.

We also need to reflect and remember those who have passed away during this time, and pay our respects for the losses experienced by families who have had loved ones in our care homes.

At the time of writing this, I am pleased to say the last wave of the pandemic appears to be abating. RMBI Care Co. is seeing a return to some form of normality in terms of the support offered to older Freemasons, their families and the wider community. In addition, despite the challenging year, we remain on course for the opening of our new care home at Lord Harris Court, Berkshire, this autumn, where we will provide specialist nursing and residential dementia care.

Please visit our website at www.rmbi.org.uk or contact our Resident Placements Manager, Debbie Hollands, on dhollands@rmbi.org.uk for details on any of our Home offers.

Mark LLOYD, Managing Director

Your say*

My father-in-law moved into the nursing area of Scarbrough Court in January. It was a stressful time for all concerned. Our fears were allayed shortly after speaking with the absolutely brilliant staff and nurses.

Relative at Scarbrough Court, March 2021

From the time Mum arrived, she was included in a multitude of activities to provide quality of life. Be assured your loved one could not be in better hands.

Relative at Cadogan Court, December 2020

The innovation of the pod, even before the second lockdown, has been brilliant - a safe and secure way for us to see our loved ones without putting them, or their carers, at risk.

Relative at The Tithebarn, November 2020

This is a really good Home. Mom is always treated well there. Nothing is too much trouble for the staff.

Relative at Zetland Court, November 2020

*Source: carehome.co.uk

News in brief



101st birthday with 101 birthday cards

Dorothy Crane, a resident at Cornwallis Court, in Suffolk, celebrated her 101st birthday earlier this year. She enjoyed a celebration at the Home, where she has lived since 2008, with her friends. Activities Coordinators Emma Gibson and Sam Wiseman came up with a lovely idea to mark Dorothy's special day: they arranged for 101 birthday cards to be sent from relatives and friends from the UK and overseas, and video calls as a surprise for Dorothy.

Resident reunites with twin sister and former showbiz partner

Our resident Peggy Bensaid has been reunited with her twin sister, Mollie, at Prince George Duke of Kent Court, in Chislehurst. Mollie visited Peggy over the Christmas period and shortly after her stay, she has now moved to the Home. The Bensaid twins, aged 98, were entertainers in the show business for 70 years, dancing, performing acrobatics and working with renowned celebrities, such as Laurel and Hardy, Shirley Bassey and Tommy Cooper.



Social media highlights



RMBI Care Co. Mar 10

Our residents in the Dementia Support Houses at Shannon Court, Surrey, enjoyed a stimulating sensory beach day with ice-creams, the sound of waves... and even a bit of sand between their toes!



RMBI Care Co. Mar 8

To keep our residents' spirits up, our kind staff at Cornwallis Court in Suffolk hosted a two day 70s disco event complete with all sorts of memorabilia, including a Chopper bike.





Albert Edward Prince of Wales Court resident takes the lead on a 1,200 mile virtual Bikeathon

John Welland, an 88 year old resident at Albert Edward Prince of Wales Court, in Porthcawl, has led the care home's Bikeathon initiative. The challenge had two goals: to encourage both residents and staff to keep active using the Home's indoor exercise bike, and to raise funds to purchase an electric side-by-side trike for residents. As a result, John spearheaded the 1,200 mile challenge and surpassed it by 500 miles on the Home's bike.

Introducing our new Nursing Zone

The new Nursing Zone of our website highlights our focus on providing quality nursing services to our residents. Led by our National Clinical Governance Lead, Jordi Sirera, our nurses are fully trained to deliver a specialist level of support for the residents within their care. Ten of our Homes have a dedicated nursing service, and our Care Operations Team create robust policies and protocols that are implemented in all our Homes.



Husband and wife are finally back together

Arthur Twitchett, a resident at Lord Harris Court, in Berkshire, has been reunited with his wife, Francine. After one year apart, Francine has now moved to the Home so the couple can be closer together. Arthur said: "We have been looking forward to this day for a long time. I am lost for words."



RMBC Care Co. Feb 17

The London Fashion Week arrived at James Terry Court, in Croydon, where residents had a great time on the catwalk.



RMBC Care Co. Mar 21

A special surprise visit from Dixie the Jack Russell to say hello to our residents at The Tithebarn in Liverpool.



RMBC Care Co. Mar 4

To celebrate World Book Day, our residents and staff at Harry Priestley House in Doncaster enjoyed an Alice in Wonderland themed tea party.



Residents reunite with family and friends

After a long year with limited contact, our residents and staff have been delighted to welcome visitors back to our Homes again and reunite families.

In March, our care homes re-opened their doors to family visits, following new government guidance, allowing care home residents to receive visits from one family member or loved one in person.

One of the first residents reunited with her family member was Edna Staines from Lord Harris Court, in Berkshire. She said: "It means so much

to me to see my daughter in person once again and have her sit next to me. Thankfully, we've been able to see each other in the Home's visitor pod during the pandemic, which has been great, but it means the world to me to be able to hold her hand again."

Lesley Booth, whose daughter lives at Harry Priestley House in Doncaster, which supports

adults with a learning disability, said: "It's so lovely to be back in the Home as it has actually been a whole year since I last visited inside. I am so happy to be able to hold my daughter's hand again and I'm looking forward to being able to give her a hug in the near future."

Mark Lloyd, Managing Director, said: "We have been waiting for this moment for a

Resident Rhoda Pemble with her daughter Vanessa at Barford Court, Hove.



Resident Joanna Anderson with her husband Brian at Prince Edward Duke of Kent Court, Essex.

long time and are overjoyed to be able to reunite our residents safely with their loved ones in person.

Throughout the pandemic, our staff have gone above and beyond to support our residents to stay connected with their loved ones, which is vital for their wellbeing."

In April, visitor restrictions have further relaxed and Homes in England are now able to have two regular visitors – either two people from the same household/bubble, or two separate visitors from different households. ■

Resident Edna Staines with her daughter Helen at Lord Harris Court, Berkshire.



Safety measures for visitors

To ensure residents' and staff's safety, before entering a Home, all visitors must:



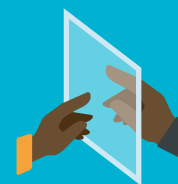
Wash their hands thoroughly and have their temperatures checked.



Undertake a lateral flow test and receive a negative result for Covid-19, before meeting their loved one in person.



Wear suitable PPE including gloves, an apron and mask.



Our visitor pods also remain open to support family meetings in a safe space.

Staying strong to protect our residents

In December 2020, in line with government plans to start vaccinating care homes residents and care workers, our residents began to receive their first vaccinations. In total, 95% of residents and over 1,000 staff members have received the vaccine to date.

Our residents and staff are regularly tested for Covid-19 using lateral flow test kits (LFTs), which provide quick and early detection of Covid-19. Testing has also been extended to enable residents to meet with two regular visitors. Visitors entering the Home must undertake and receive a negative result for Covid-19 before meeting their loved one in person.

Our staff also continue to support phone and video calls to enable residents to keep in touch with their loved ones.

Supporting our residents' wellbeing

Our Homes are safely able to welcome new residents thanks to the robust infection prevention and control measures carried out by our staff.

Where we provide nursing care, our nurses play a key role in keeping our residents safe and in leading our staff. They apply clinical expertise and follow guidance from the Nursing & Midwifery Council, to safeguard our residents' health.

Our nurses ensure that our Homes' workforce follow the guidelines and wear appropriate personal protective equipment (PPE), especially those who are in contact with our residents. They also teach our care staff to identify when a resident's health has been affected. Thanks to our comprehensive training, our carers have learned how to monitor our residents' blood pressure, oxygen levels and pulse. ■



Staff member Matthew Owen-Neil and resident Patricia May receive their first vaccination at Albert Edward Prince of Wales Court, in Porthcawl, and Prince Edward Duke of Kent Court, in Essex, respectively.

Check out our latest Impact Report to learn more about how we have responded to Covid-19 over the past year. You can read it at www.rmbi.org.uk/about-us/our-impact



Together we are stronger

RMBI Care Co.'s management team have also worked tirelessly during the pandemic to lead our Homes' staff, overcome challenges together and, most importantly, ensure our residents' wellbeing. This includes:



Mark Lloyd, MD, and Karen Salley, Care Operations Director, lead a daily Covid Review Group to discuss developments in government guidance and what infection and control measures need to be implemented. These are then communicated to our Homes' management teams.



Karen meets weekly with our three Regional Operation Managers to ensure all our Homes are fully supported. Maintaining staff morale has been more important than ever during this last year.



Russell Evans, Regional Manager for our care homes in the Southern region, says each of the Regional Managers visit their Homes monthly to make sure that standards are constantly maintained and improved. He said: "Relatives trust the brilliant support that our staff members provide to their loved ones."



Resilience, relief and recovery:

How Freemasons are making a difference to coronavirus-hit communities.

With many fundraising events being cancelled, as well as millions of households feeling the pinch of redundancy or furlough, countless charities and households have seen their income take a hit. Sadly, many charities have had to close their doors – some permanently – and many families are struggling to cope.

This comes at a time when charitable support is needed more than ever by vulnerable or low-income families and individuals.

However, Freemasons have been rising to the challenge, donating generously to the Freemasons' Covid-19 Community Fund, raising a phenomenal £1 million in just 16 weeks – a figure which was then matched by the Masonic Charitable Foundation (MCF). This has meant support has been available for both charities and individuals.

Since the beginning of the pandemic, the MCF has given 607 grants to charities and community projects providing relief to those affected by the pandemic with a total value of more than £3.2 million. A further £750,000 was given

to three leading charities, which worked hard to alleviate the negative impact of Covid-19 on mental health, older people, and children; Mind, Age UK and Buttle UK.

The MCF has been able to support a wide spectrum of charities, reflecting the breadth of need arising from the pandemic. From funding over 200 food banks, anti-poverty, and homelessness charities with grants totalling £1.19 million to backing the development of an app to help diabetic children manage their condition from home, Freemasons are responding to the needs of their communities.

The MCF also gave around 3,500 grants totalling almost over £11.5 million to Freemasons and their families struggling during the Covid-19 crisis and the counselling service, which helps Freemasons and families who need support with mental health, has seen a 28% increase in enquiries during lockdown.

Grants to cover emergency living costs and educational expenses have also been provided to many people –



A volunteer at Worcester Food Bank, one of over 200 food banks supported by the MCF.

including 326 grants for laptops or tablets for home learning, with a total value of over £148,000.

While the coronavirus crisis has sadly threatened the health, wellbeing, and financial stability of millions of people all over England and Wales, it has also shown communities to be caring and supportive of those in need. The MCF is grateful to all Freemasons and their families whose support has meant the most vulnerable members of the community have access to the resources they need for relief and recovery. ■

Are you interested in finding out more about the MCF and its work in your community? Visit mcf.org.uk/sign-up and subscribe to the MCF's e-newsletter to stay up to date with all their latest news, announcements and impact!

Green-fingered residents share their passion with local schoolchildren

Residents at Cadogan Court, in Exeter, have teamed up with local schoolchildren to sow seeds in preparation for the growing season. The care home sent various seeds to the school and they connected virtually to share their knowledge.

Resident Mary Skipworth, aged 96, taught the children how to sow sunflower and pumpkin seeds as well as runner beans. Then she told them her secret: "These are quite easy to take care of as long as you keep them watered. They are fun to grow!"

The residents at Cadogan Court and children at West Exe Nursery School used to

visit one another regularly. However, determined not to let the lockdown restrictions cut off this intergenerational link, the Home and the school started to arrange video calls to stay connected. Emma Allan, Activities Coordinator at Cadogan Court, said: "It's wonderful to see the different generations learning from each other and sharing experiences."

At Harry Priestley House, in Doncaster, residents have been planting flowers for spring, thanks to a kind donation from local schoolchildren.

Resident David Jepson, who is a keen gardener, was thrilled to receive the plants. He said: "Gardening is one of my favourite activities. Our Home has a lovely spacious garden and I'm looking forward to spending more time outdoors as the weather gets brighter and warmer."

Anne Stobart, Home Manager at Harry Priestley House, said: "It was such a delight to receive the flowers from the schoolchildren of Marshland Primary School. It lifted our residents' spirits up. ■

Resident David Jepson at Harry Priestley House with garden plants donated by schoolchildren.



Find your local RMBI Care Co. Home

At RMBI Care Co., we provide residential care, nursing and residential dementia support to older Freemasons, their families and people in the wider community.

We have been caring for older people for over 170 years and today we support over 1,000 residents across 18 care homes in England and Wales.

Contact your preferred Home today to find out more about our services.

- | | |
|---|--|
| 1 Albert Edward Prince of Wales Court, Bridgend
Tel: 01656 785 311 | 11 Prince George Duke of Kent Court, Kent
Tel: 020 8467 0081 |
| 2 Barford Court, Hove
Tel: 01273 777 736 | 12 Prince Michael Of Kent Court, Watford
Tel: 01923 234 780 |
| 3 Cadogan Court, Exeter
Tel: 01392 251 436 | 13 Queen Elizabeth Court, Llandudno
Tel: 01492 877 276 |
| 4 Connaught Court, York
Tel: 01904 626 238 | 14 Scarbrough Court, Northumberland
Tel: 01670 712 215 |
| 5 Cornwallis Court, Suffolk
Tel: 01284 768 028 | 15 Shannon Court, Surrey
Tel: 01428 604 833 |
| 6 Devonshire Court, Leicester
Tel: 01162 714 171 | 16 The Tithebarn, Liverpool
Tel: 0151 924 3683 |
| 7 Ecclesholme, Manchester
Tel: 01617 889 517 | 17 Zetland Court, Bournemouth
Tel: 01202 769 169 |
| 8 James Terry Court, Croydon
Tel: 020 8688 1745 | 18 Harry Priestley House, Doncaster
Residential care for adults with learning disabilities.
Tel: 01405 814 777 |
| 9 Lord Harris Court, Berkshire
Tel: 01189 787 496 | |
| 10 Prince Edward Duke of Kent Court, Essex
Tel: 01376 345534 | |

RMBI News

Published in April 2021

The Royal Masonic Benevolent Institution Care Company

60 Great Queen Street, London, WC2B 5AZ

Phone: 020 7596 2400

Email: enquiries@rmbi.org.uk

Registered Charity No: 1163245

Company No: 1293566

RMBI Care Co. is part of the Masonic Charitable Foundation – Funded entirely through the generosity of Freemasons, their friends and families, the Masonic Charitable Foundation (MCF) builds better lives by encouraging opportunity, promoting independence and improving wellbeing. For more information, please visit: www.mcf.org.uk



www.rmbi.org.uk

www.facebook.com/thermbi

www.twitter.com/thermbi