

RMBI NEWS

ISSUE 33
AUTUMN/WINTER
2025



Where
everyone
belongs

Celebrating
diversity with
a Nepalese
culture day

Heartfelt
tokens of
appreciation

Kind Supportive Trusted

Caring is our way of life

www.rmbi.org.uk



If you would like an audio version of RMBI News, please email marketing@rmbi.care



Where everyone belongs
page 6



Celebrating diversity with a Nepalese culture day
page 8



Heartfelt tokens of appreciation
page 11

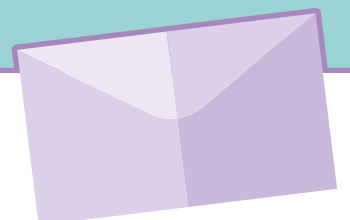
Contents

- 3 A message from Debra Keeling, MD
- 4 News in brief
- 6 Where everyone belongs
- 8 Celebrating diversity with a Nepalese culture day
- 9 Recognised for outstanding care
- 10 MCF news: Bath City Farm's 'Little Farmers' programme
- 11 Heartfelt tokens of appreciation
- 12 Our Homes' locations

Front cover photo: Resident Brenda cheerfully plays the ukulele at Scarbrough Court, in Northumberland.

RMBI News is edited by RMBI Care Co.'s Marketing Team: Gonzalo Mellado, Maricel Foronda and Chiao Kwan.

Send us your comments about this issue or any suggestions for future issues of RMBI News at marketing@rmbi.care or write to us at RMBI News Team, 60 Great Queen Street, London WC2B 5AZ



A message from Debra Keeling, Interim MD



In recent years, various award schemes have recognised us for our quality of care and dedication to meeting our residents' needs.

Our internal Dementia Accreditation programme, EMBRACE, supports our staff to enhance the lives of our residents living with dementia, with several of the modules now externally accredited. This forward-thinking approach enabled us to win the 'Dementia Care Employer (Residential)' Award at the 2025 Dementia Care Awards, a national recognition that celebrates excellence in dementia care.

This summer, we also celebrated a Gold Award from the Royal Society for the Prevention of Accidents. The award is presented to organisations that demonstrate well-developed health and safety management systems and culture in the workplace, and an unwavering commitment to protecting residents, staff and visitors in their services.

We are committed to ensuring our Homes provide an inclusive space for everyone; a safe place where people share our values and can live authentically. We support these goals through training, sharing our experiences, and by challenging each other in our practice. Read more about how our Homes have celebrated culture, diversity and individuality in recent months throughout this issue.

Thank you to all our readers for your continued support for our charity.

Debra Keeling

Interim Managing Director

Your Say*

"The staff I have seen with my mum all show a great amount of care and consideration for her. The area my mum lives in is always clean and tidy."

Son of a resident at
The Tithebarn, Liverpool

"My mother was given excellent care throughout her stay. All staff are exemplary in their work and care."

Son of a resident at Prince Philip
Duke of Edinburgh Court, Berkshire

"I consider Connaught Court to be what care homes should be. I cannot recommend it enough."

Grandson of resident at
Connaught Court, York

"My husband has only been at Devonshire Court a few weeks, but already refers to it as his new Home. The relief to the family knowing he is happy and well cared for is immense."

Wife of a resident at
Devonshire Court, Leicester

*Source: carehome.co.uk



News in brief



Residents experience the joy of art

Residents at Prince George Duke of Kent Court, in Kent, have been exploring their creative side during an art session. Research has shown that arts and crafts can have many benefits. It can improve your mood, stimulate your brain and enhance your motor skills. On top of that, it also encourages people to socialise when carried out as a group activity.

Woolly llamas amaze residents and staff

Residents and staff at Cadogan Court, in Exeter, have welcomed Harry and George, two llamas from Peak Hill Llamas, a Sidmouth-based company specialised in these types of encounters. Accompanied by caretakers, the woolly four-legged couple toured around the Home, where residents and staff had the opportunity to stroke and pet them. Those who have visual impairments particularly enjoyed the visit, as they could experience it through touch. "They're so soft, calm and friendly!" said the residents with a smile.



Social media news



Creative spirits are thriving at Zetland Court! Residents at our Home in Bournemouth have enjoyed patchwork quilting and a live wool-spinning demo as part of their "aged craft" programme.



Residents and staff at Cornwallis Court, in Bury St Edmunds, have enjoyed a Cultural Food Festival – a wonderful celebration of diversity!



Growing a greener legacy

Albert Edward Prince of Wales Court residents have been delighted to welcome 75 new trees to their Home, in Porthcawl. Residents Jean and Dilys and Activities Coordinator Nicola helped plant some of the saplings around the Home's grounds. The care home received these trees as part of the '3 Million Trees' project by The Tree Council, on behalf of National Highways. According to the Woodland Trust, trees can reduce both outdoor and indoor pollution by up to 50%.



Staff member completes cycle relay for a great cause

Nikki Clack, HR Business Partner at RMBI Care Co., proudly took part in the final leg of the Great British Care Cycle Relay 2025, a national event designed to raise awareness of social care across the UK. She completed a challenging 110km ride from Brighton to London in support of the social care sector. Each route included visits to care homes along the way. At James Terry Court, in South Croydon, the riders were welcomed with a celebratory reception from residents, staff and members of the Home's Association of Friends.



Happy 30th anniversary to Shannon Court – and to Glynis Thorne, one of our very first staff members at our Home in Surrey! To mark the occasion, the care home held a joyful day of celebrations with live music, a BBQ, therapy pets and plenty of smiles.



Congratulations to Sam Buxton, Home Manager at Scarborough Court, in Northumberland. She has received her Long Service Award for being with us over the last 10 years.



Where everyone belongs

At RMBI Care Co., our spirit of inclusion is not reserved for certain occasions; we strive to make it present in the way we decorate our spaces, the conversations we share and the moments of joy we create together.

According to Age UK, there are an estimated one million lesbian, gay and bisexual people aged 55 or over in Britain today. This is why it is vital that care homes show residents that they embrace diversity. One way of doing this is by celebrating Pride — a time to recognise love, identity and community in all their forms. In recent months, many of our Homes have embraced celebrations that highlight this culture of openness.

Connaught Court, York

Residents and staff marked Pride Month with a vibrant week of celebrations, including rainbow-themed decorations, cupcakes and a colourful afternoon tea party. The festivities also included sharing personal stories and a learning session on LGBTQ+ history, highlighting the importance of recognising the community's contributions and creating a safe, welcoming space for all.

Prince Edward Duke of Kent Court, Braintree

The gardens of our Home in Essex became a stage for vibrant performances by drag queens Sara Khasm and Sirena Hart. Rainbow flags waved in the sunshine as residents and staff joined together in a shared celebration. Here, the joy came not only from the music but also from a sense of connection and camaraderie.





Queen Elizabeth Court, Llandudno

Inclusivity also means making space for conversation and learning. At our Home in North Wales, rainbow colours brightened the Home as residents explored the history of LGBTQ+ rights, sparking thoughtful discussions about respect, change and the importance of living authentically.

Prince Michael of Kent Court, Watford

In Watford, our Home combined rainbow-themed treats, music and decorations with storytelling about figures such as Sir Elton John and human rights advocate Peter Frank Ashman, weaving personal memories into the shared history of progress and acceptance.

Bottom Left: Resident Maureen celebrating Pride Month with the Home Management Team at Queen Elizabeth Court, in Llandudno.

Above: Resident Bill, with Pride flags painted on his cheeks, poses with drag queens Sara Khasm and Sirena Hart at Prince Edward Duke of Kent Court, in Braintree.

“

We want every resident, staff member and visitor to feel seen, valued and free to be themselves. That's what makes our communities thrive.

Russell Evans, Interim Operations Director

”

Did you know?



Until 1967, having a relationship with somebody of the same sex was a criminal offence in the UK. Awareness and equality have made huge strides since then, but some people may never feel that they can fully embrace who they are for fear of discrimination. ■

Celebrating diversity with a Nepalese culture day

Residents at Queen Elizabeth Court, in Llandudno, were treated to a vibrant day organised by staff member Deepa, who shared traditions from her heritage.

Residents were delighted to learn more about some Nepalese traditions. Dressed in a colourful Nepalese costume, Deepa talked about her home country and explained some of the different aspects of her

culture, such as alcohol being forbidden but mandatory on one's wedding day.

After the engaging talk, residents had the opportunity to try on a *Dhaka topi*,

a traditional Nepalese cloth hat. They also received a *Tika* or 'third eye', a symbolic red eye on the forehead, which is a sign of respect.

Taking part in the activities, resident Mary says: "I enjoyed learning about Nepal and the culture. Deepa was beautifully dressed representing her country. She is a hardworking carer, and we are grateful to have her at Queen Elizabeth Court."

Staff member Deepa comments: "I wanted to show people that Nepal is a nation where beauty meets adventure and culture blends with tranquillity.

"I'm looking forward to doing another discussion soon about 'Kumari' (a living goddess in Hinduism and Buddhism) with full Kumari costume." ■

Left: Training Manager Bee receives a *Tika* (traditional Hindu forehead mark) from Deepa at Queen Elizabeth Court, in Llandudno.



Recognised for outstanding care

RMBI Care Co. has received a Gold Award in the Royal Society for the Prevention of Accidents (RoSPA) 2025 Awards, recognising its strong commitment to health and safety.

Brett Edwards, Health, Safety and Risk Director at RMBI Care Co., says: “We are immensely proud to receive this award, which recognises our dedication to health and safety not just for our residents and staff, but for anyone who comes into one of our care homes.” The RoSPA Awards are now in their 69th year.

Building on this dedication to high-quality care, RMBI Care Co. has also been recognised for its focus on dementia care. The charity received the ‘Dementia

Care Employer (Residential)’ award in recognition of its EMBRACE accreditation, a programme designed to improve dementia care standards across its Homes. Five care homes have now achieved the accreditation, which includes modules endorsed by The CPD Certification Service to help staff enhance their skills and understanding.

The awards also highlight the outstanding contributions of individual staff. Recent honours

include Nina Stephens, named National Registered Home Manager; Simon Doherty of The Tithebarn, recognised as North West Dementia Carer; Denise O’Brien, Registered Home Manager for the East region; and Tonya Bibby, Social Care Nurse for London region. ■

Below: Lucy Tupenny, Assistant Director of Quality and Governance, and Anne Child, Pharmacy and Dementia Specialist Lead at RMBI Care Co., attend the Dementia Care Awards national ceremony.

“

It is vital we keep working with and listening to people living with dementia to help shape our future environments.

Anne Child, RMBI Care Co.’s Pharmacy and Dementia Specialist Lead

”



MCF news: Bath City Farm's 'Little Farmers' programme

Around 90 children under five, from disadvantaged backgrounds or with developmental challenges, will benefit from Bath City Farm's 'Little Farmers' programme. This has been made possible thanks to a grant from the Masonic Charitable Foundation (MCF, the Freemasons' charity).

The £34,000 grant will support the programme for three years, with applications welcomed from families with children who have additional needs, those who may have concerns about their children's development or people who have social, health, financial or other barriers to attending playgroups and nurseries. Children in the group learn through play, creativity, communication, positive socialising and fun physical exercise.

The funding will make a significant difference to the lives of local children and their families by providing assistance through an experienced coordinator. Families will benefit from the coordinator's support, knowledge and help, as well as being able to socialise with other families in a supportive and fun learning environment. The money will also enable Little Farmers to provide materials and equipment for use by the children.

Sadie Rhodes, Little Farmers Lead at Bath City Farm, says: "We're so grateful to the Freemasons for their generous

grant. It will allow us to continue to enhance our Little Farmers programme so we can help and support more children and their families from the local area."

Graham Puddy from Somerset Freemasons says: "I'm very pleased we've been able to help Bath City Farm with their excellent programme helping local children from underprivileged backgrounds. Many families are living with physical or mental health conditions or experiencing other challenges. This group gives both children and their parents a safe supportive space to learn the necessary skills to be ready for school." ■



Above: Local children and their families enjoy helping feed the goats at Bath City Farm.

To learn more about the MCF's Charity Grants priorities, scan the QR code with your phone camera or visit mcf.org.uk/get-support/grants-to-charities/our-priorities/



Heartfelt tokens of appreciation

YOU'RE AMAZING!

At Barford Court, in Hove, one thoughtful resident has found a beautiful way to say thank you to the care team.

Stephani, a much-loved resident at the Home, has taken it upon herself to recognise the dedication of the staff by handing out personalised keyrings, each featuring a positive affirmation and a heartfelt message of gratitude.

The keyrings, adorned with uplifting quotes, such as “You’re amazing” and “This is a reminder of how great you are”, were handed out by Stephani herself in a small, informal gathering with the team. As she warmly presented the tokens to the carers, Stephani said: “We appreciate you so much and everything you do for us.”

Her thoughtful gesture touched everyone who received one, reinforcing the Home’s strong sense of community. ■

Above: Resident Stephani hands out personalised keyrings to staff member Alosius.



“

It meant a great deal to the team to receive such kind words and gratitude directly from someone they care for every day.

Gavin Kingham, Home Manager at Barford Court

”

Find your local RMBI Care Co. Home

We provide residential care, nursing and residential dementia support to older Freemasons, their families and people in the wider community.

We have been caring for older people for over 180 years and today we support around 1,000 residents across 17 care homes in England and Wales.

Check out our promo videos at www.rmbi.org.uk to find out more about our Homes.



- | | |
|---|---|
| 1 Albert Edward Prince of Wales Court, Bridgend
Tel: 01656 785 311 | 10 Prince George Duke of Kent Court, Kent
Tel: 020 8467 0081 |
| 2 Barford Court, Hove
Tel: 01273 777 736 | 11 Prince Michael Of Kent Court, Watford
Tel: 01923 234 780 |
| 3 Cadogan Court, Exeter
Tel: 01392 251 436 | 12 Queen Elizabeth Court, Llandudno
Tel: 01492 877 276 |
| 4 Connaught Court, York
Tel: 01904 626 238 | 13 Scarbrough Court, Northumberland
Tel: 01670 712 215 |
| 5 Cornwallis Court, Suffolk
Tel: 01284 768 028 | 14 Shannon Court, Surrey
Tel: 01428 604 833 |
| 6 Devonshire Court, Leicester
Tel: 01162 714 171 | 15 The Tithebarn, Liverpool
Tel: 0151 924 3683 |
| 7 James Terry Court, Croydon
Tel: 020 8688 1745 | 16 Zetland Court, Bournemouth
Tel: 01202 769 169 |
| 8 Prince Philip Duke of Edinburgh Court, Berkshire
Tel: 01189 787 496 | 17 Harry Priestley House, Doncaster
Residential care for adults with learning disabilities.
Tel: 01405 814 777 |
| 9 Prince Edward Duke of Kent Court, Essex
Tel: 01376 345534 | |

RMBI News

Published in October 2025

The Royal Masonic Benevolent Institution Care Company

60 Great Queen Street, London, WC2B 5AZ

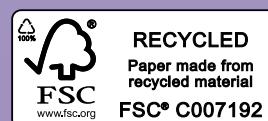
Phone: 020 7596 2400

Email: enquiries@rmbi.care

Registered Charity No: 1163245

Company No: 1293566

RMBI Care Co. is part of the Masonic Charitable Foundation – Funded entirely through the generosity of Freemasons, their friends and families, the Masonic Charitable Foundation (MCF) builds better lives by encouraging opportunity, promoting independence and improving wellbeing. For more information, please visit: www.mcf.org.uk



www.rmbi.org.uk

www.facebook.com/thermbi